

DV30 Light

120VAC/150W
240VAC/150W



Introduction:

Congratulations on the purchase of your new deck light. Underwater Lights® USA, LLC takes pride in providing well designed, high quality and thoroughly tested lights that allow you to “enhance your boating experience”. These lights can be installed in your vessel for aesthetics, security and safety.

General Operating Information:

The 150W, HID, gas discharge lamp used in this light is not an instant re-strike lamp. This means that it must be allowed to cool for approximately 10 to 20 minutes after being shut off before being restarted. HID lamps generally require approximately 2 minutes to reach full brightness and should be left on for a minimum of 10 minutes. Failure to do so may cause the lamp to flicker when it is turned on the next time.

General Safety Information:

This light is intended for vessel exterior (rain or indirect water spray) lighting applications.

High temperature silicone electrical cable must be used between the light and the ballast, standard ships cable can be used from the A/C power source to the ballast.

Always disconnect and lock-out power before working on light.

Technical Specifications:

Lamp = 150 Watt - Metal halide - 12,000 Lumens - 7500 Kelvin color temperature - Approximately 3,000 hours life

Glass = Clear borosilicate glass - 3.2mm (0.125”) thick - 116mm (4.6”) diameter net aperture

Dimensions = 160mm (6.3”) diameter x 187mm (7.4”) long - 1866 grams (4.1 lbs) - Fits through a 125mm (4.9”) diameter hole

Construction = Stainless steel - Black anodized marine aluminum alloy

Power supply = 120VAC 50/60Hz input, 1.33 Amps - Minimum operating temperature -30°C (-22°F)

OR

Power supply = 240VAC 50/60Hz input, 0.59 Amps - Minimum operating temperature -30°C (-22°F)

Troubleshooting:

Please contact our technical support staff in Florida at 1-954-760-4447, Monday to Friday from 8:00 am to 5:00 pm EST.

Warranty:

Underwater Lights® USA, LLC warrants this light to be free from defects in workmanship and materials for a period of one year from the date of original purchase (except lamps). Further, misuse, abuse, improper installation, neglect, improper shipping, damage caused by disasters such as fire, flood and lightning, unauthorized repair or modifications will void said warranty. Should your light prove defective during the warranty period, promptly contact Underwater Lights® USA, LLC for an RMA number and then return the light freight prepaid with the RMA number clearly marked on the outside of the shipping container.

Underwater Lights USA, LLC
277 SW 33rd Court
Fort Lauderdale, FL 33315 USA
Phone: 1-954-760-4447
Fax: 1-954-525-3261
Internet: www.seavision.com
Email: sales@seavision.com



DOC:050206-3W

Underwater Lights Europe Sarl
Résidence L'Hippocampe: 19, Avenue Thiers
06600 Antibes, France
Phone: 33-(0)-4-97-21-02-96
Fax: 33-(0)-4-97-21-10-96
Internet: www.seavision.com
Email: sales@seavisioneurope.com

DV30 Light

120VAC/150W
240VAC/150W



Installation:

Unscrew Front Flange (1) or remove Front Flange (24) with Screws (25) from Main Body (3) and remove six supplied Phillips Flat Head Screws (16). Remove Lamp Spring Clip (7), Reflector (10), Lamp (13), four Phillips Pan Head Screws (22) and Mounting Bracket (11) with other internal components from Swivel Cone (4).

After selecting a flat surface, cut a 125mm (4.9") diameter hole through said surface at the desired location. Caution! Check that no electrical wiring, fuel lines, oil lines, water lines etc., pass near or through the intended hole location. Place Main Body (3) with Body Gasket (9) through above hole and secure using six Phillips Flat Head Screws (16). Note: Depending upon installation surface material, six drilled pilot holes may be required. Also, optional stainless steel or aluminum flush mount weld in adapters are available for this light.

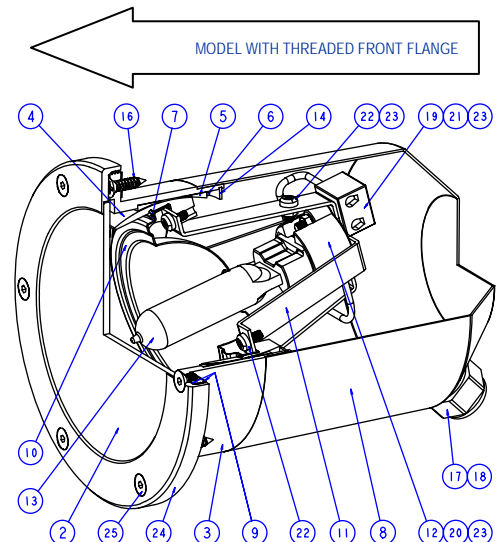
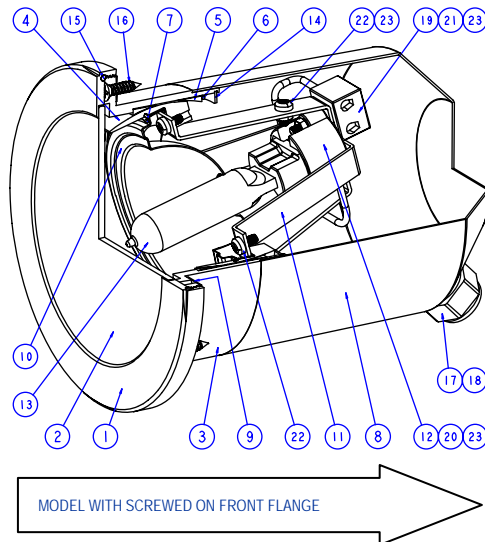
Upon making proper electrical connections (see ballast manual) to Porcelain Terminal Block (19) and ground screw (22), carefully install Mounting Bracket (11) with other internal components into Swivel Cone (4) and secure with four Phillips Pan Head Screws (22). Install Lamp (13), Reflector (10) and Lamp Spring Clip (7) into Swivel Cone (4) then Screw Front Flange (1) or attach Front Flange (24) with Screws (25) onto Main Body (3) accordingly. Caution! Ensure new lamp is clean and free of dust, dirt, grease, oil, water and finger prints.

Serviceable Parts:

Lamp replacement is done by unscrewing Front Flange (1) or removing Front Flange (24) with Screws (25) from Main Body (3), removing Lamp Spring Clip (7) and Reflector (10), pulling old Lamp (13) out of the Lamp Socket (12), inserting new Lamp (13) into the Lamp Socket (12), replacing Reflector (10) and Lamp Spring Clip (7) then screwing Front Flange (1) or replacing Front Flange (24) with Screws (25) onto Main Body (3) accordingly. Caution! Ensure new lamp is clean and free of dust, dirt, grease, oil, water and finger prints. Additionally, Glass (2) cannot be removed because it is permanently bonded to Front Flange (1) or (24).

BALLOON	DESCRIPTION
1	FRONT FLANGE, SST, MIRROR FINISH*
2	GLASS, CLEAR*
3	MAIN BODY, STAINLESS STEEL*
4	SWIVEL CONE
5	SWIVEL CUP
6	SWIVEL SPRING
7	LAMP SPRING CLIP
8	LAMP COVER
9	BODY GASKET
10	REFLECTOR, 25° BEAM ANGLE*
11	MOUNTING BRACKET
12	LAMP SOCKET
13	LAMP, 150 WATT*
14	INTERNAL RETAINING RING
15	FRONT FLANGE O-RING
16	No. 10 x 3/4" LG SST PFHS
17	CABLE STRAIN RELIEF
18	CABLE STRAIN RELIEF LOCK NUT
19	PORCELAIN TERMINAL BLOCK
20	M4 x 0.7 x 16 LG SST SHCS
21	M4 x 0.7 x 30 LG SST SHCS
22	M4 x 0.7 x 8 LG SST PPHS
23	M4 x 0.7 SST HEX NUT
24	FRONT FLANGE, SST, MIRROR FINISH*
25	M5 x 0.8 x 8 LG SST SFHS

*PLEASE CALL FOR OTHER LIGHT COMPONENT CONFIGURATIONS



Underwater Lights USA, LLC
277 SW 33rd Court
Fort Lauderdale, FL 33315 USA
Phone: 1-954-760-4447
Fax: 1-954-525-3261
Internet: www.seavision.com
Email: sales@seavision.com



DOC:050206-3W

Underwater Lights Europe Sarl
Résidence L'Hippocampe: 19, Avenue Thiers
06600 Antibes, France
Phone: 33-(0)-4-97-21-02-96
Fax: 33-(0)-4-97-21-10-96
Internet: www.seavision.com
Email: sales@seavisioneurope.com